



Stump Pass' Top Ten List

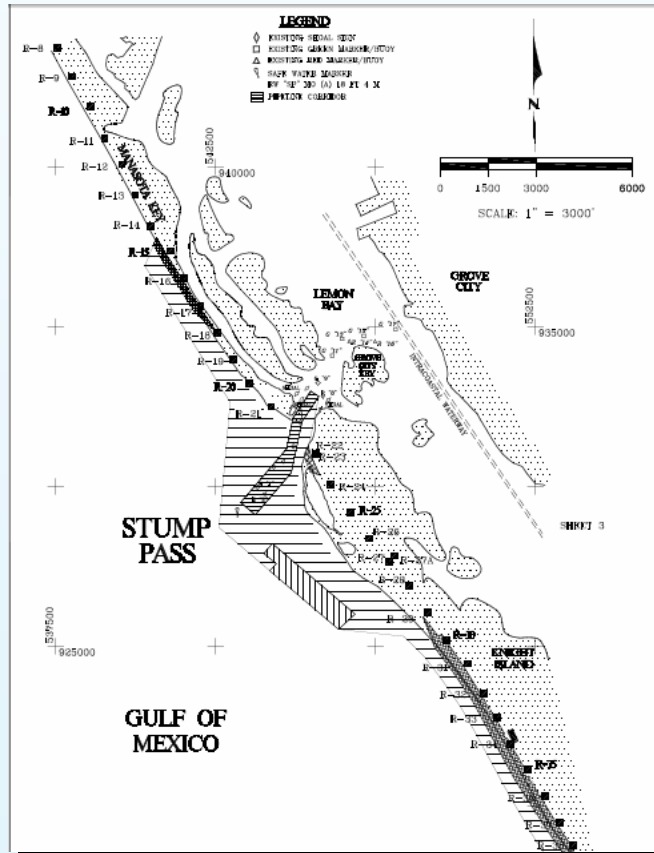


Florida Shore & Beach Preservation Annual Meeting September 22, 2010

"To Exceed Expectations in the Delivery of Public Services"



Stump Pass' Top Ten List



"To Exceed Expectations in the Delivery of Public Services"

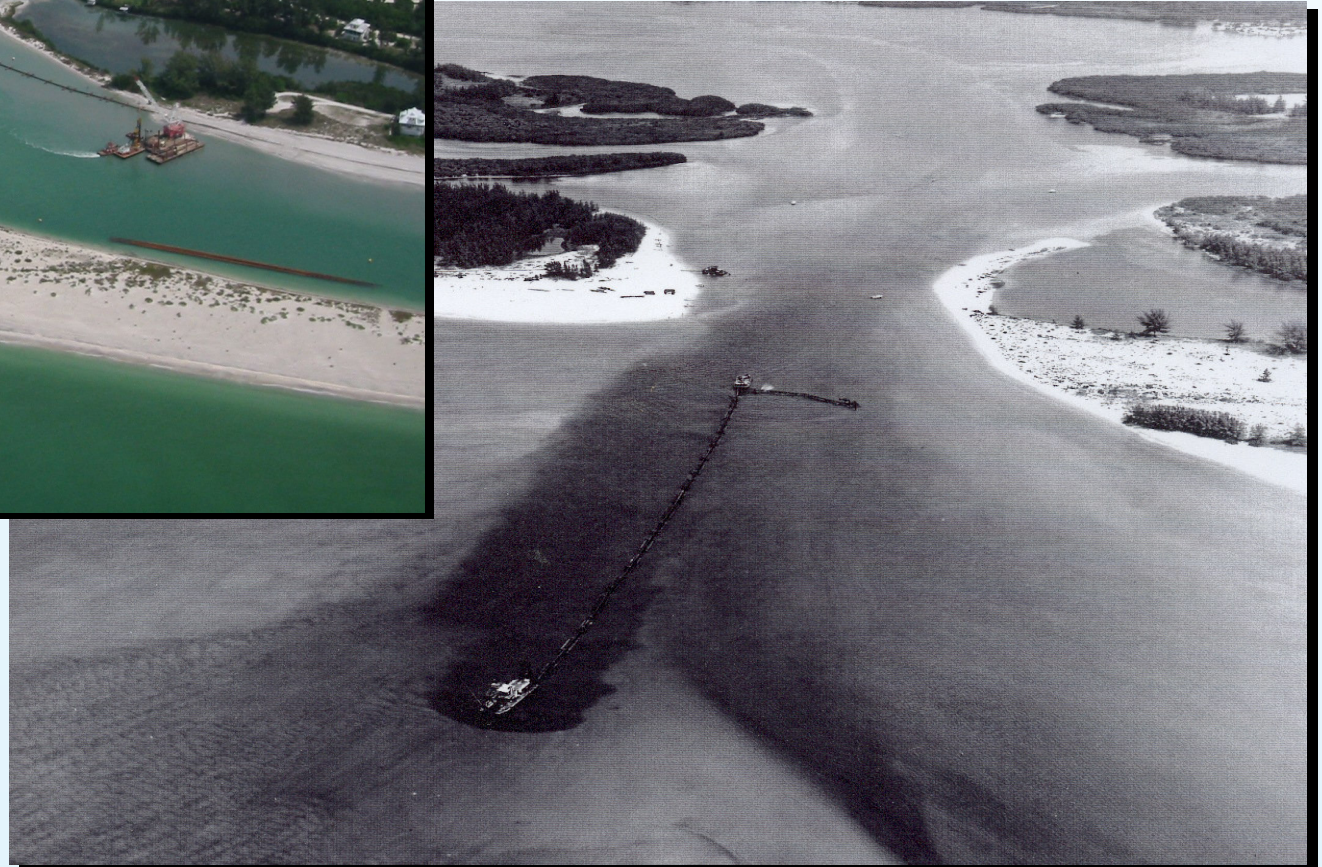


Impacts to the Tidal Prism



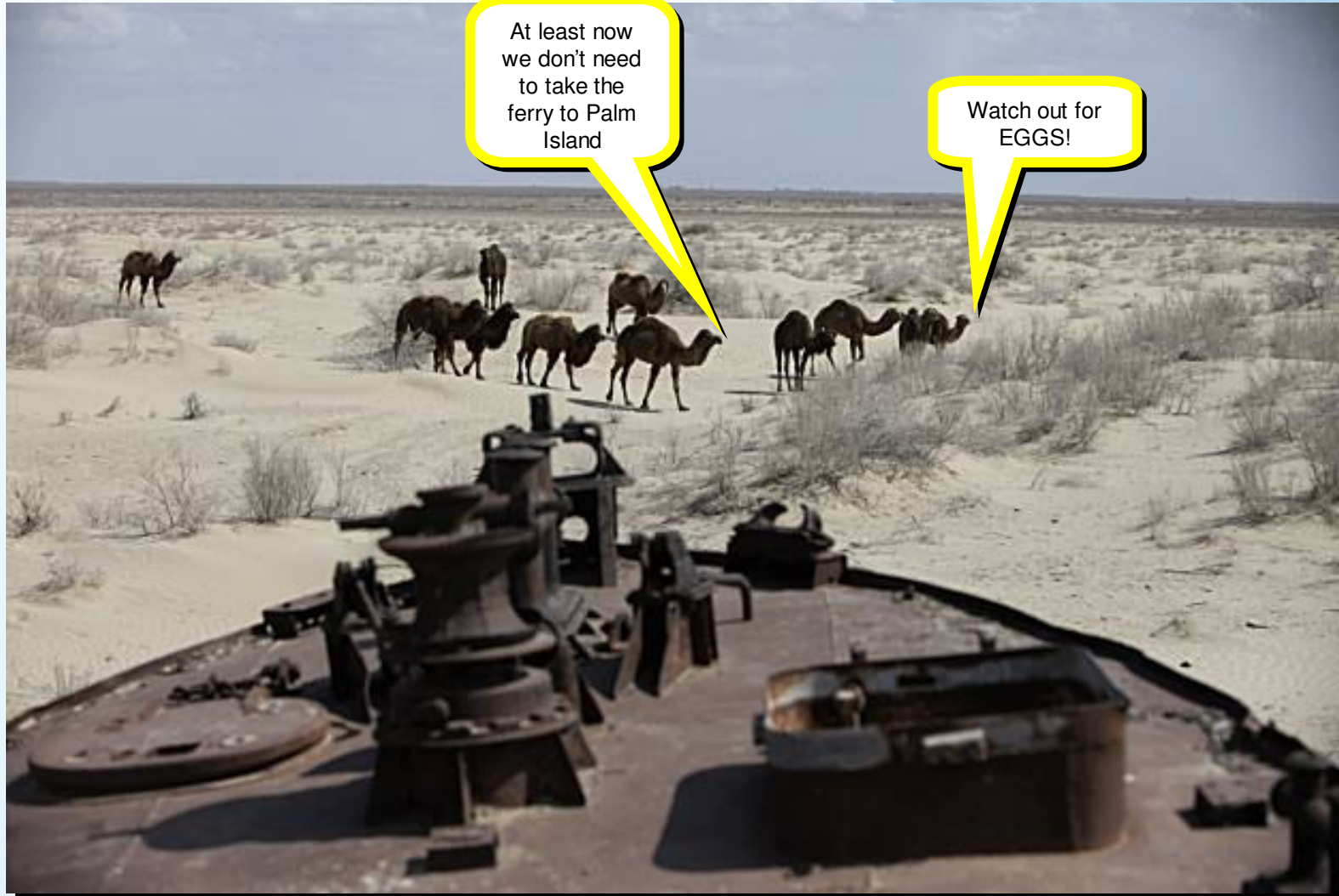


Original 1980 Dredging





Navigation



At least now
we don't need
to take the
ferry to Palm
Island

Watch out for
EGGS!



Governor & Cabinet



Four of a Kind Trumps FL Statutes



Golden Egg





Resource Management



Charlotte County Erosion Control Shorebird Fledging Data – 7 Year Overview

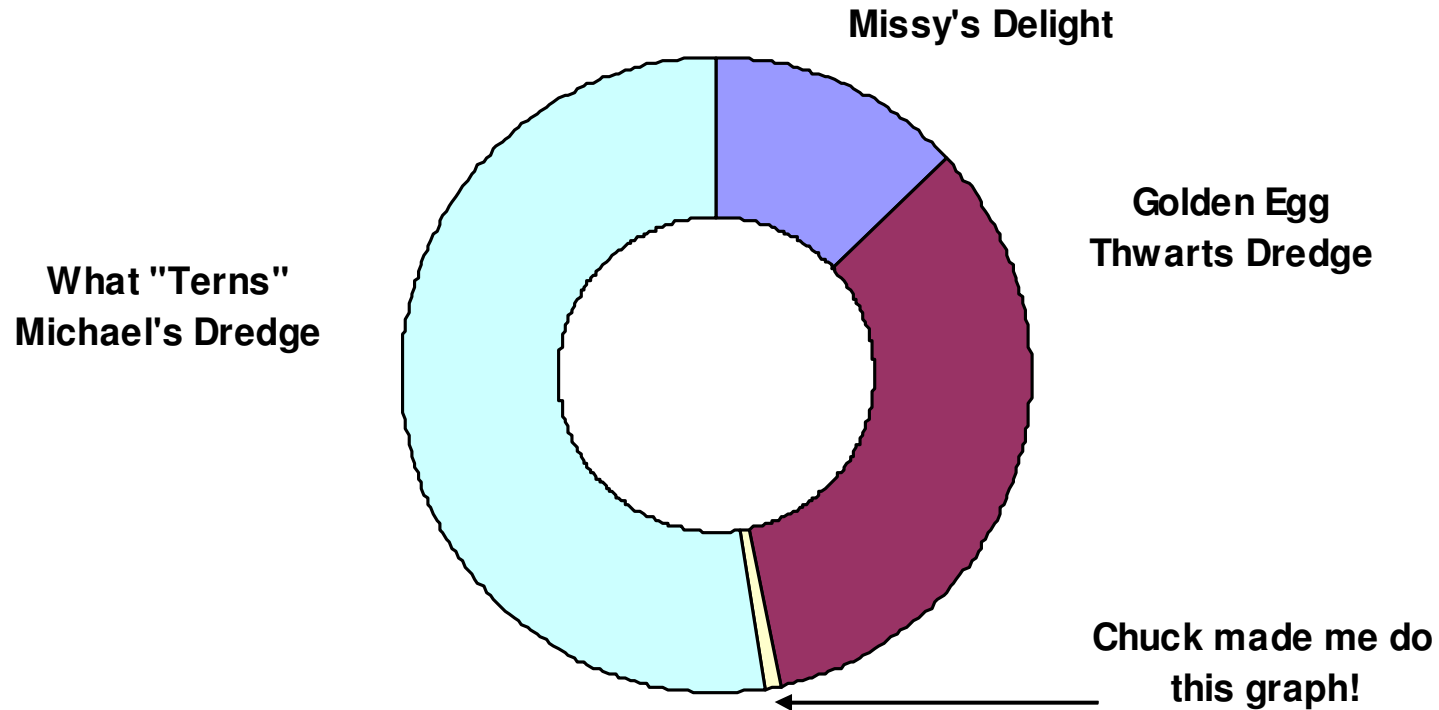
	2003	2004	2005	2006	2007	2008	2009
Observed Species							
	Fledged	Fledged	Fledged	Fledged	Fledged	Fledged	Fledged
Snowy Plover	2	3	5	4	1	5	10
Wilson's Plover	9	7	21	7	10	12	11
Black Skimmer	0	0	0	0	0	0	2
Least Tern	30	17	10	25	2	31	5
American Oystercatcher						0	0



Resource Management Cont.



7- Year Overview - Shorebird Fledging





Resource Management Cont.



No Sand = No Nests

NESTS & FALSE CRAWLS	2008 Nests	2009 Nests	2010 Nests
	145	95	86
Updrift Beach Fill Area R-14 to R-22 North Portion of Project	FC	FC	FC
	118	137	155

SEA TURTLE NESTING AREA

STAIRWAY



An escalator would be nice here!!!!





Resource Management Cont.



WORTH THE EFFORT



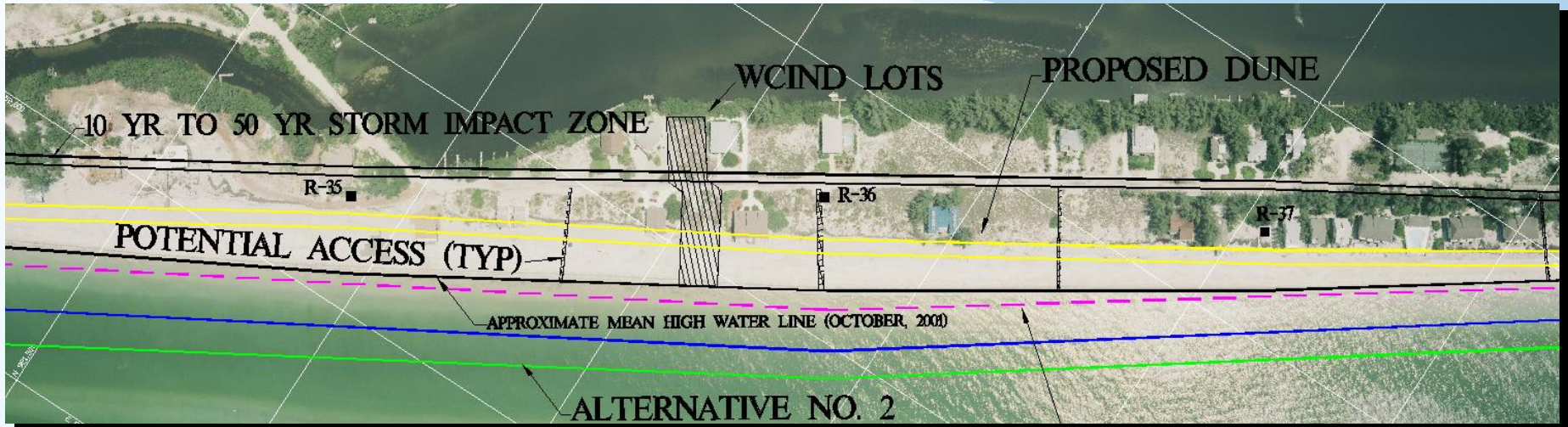
Snowy Plover Chick



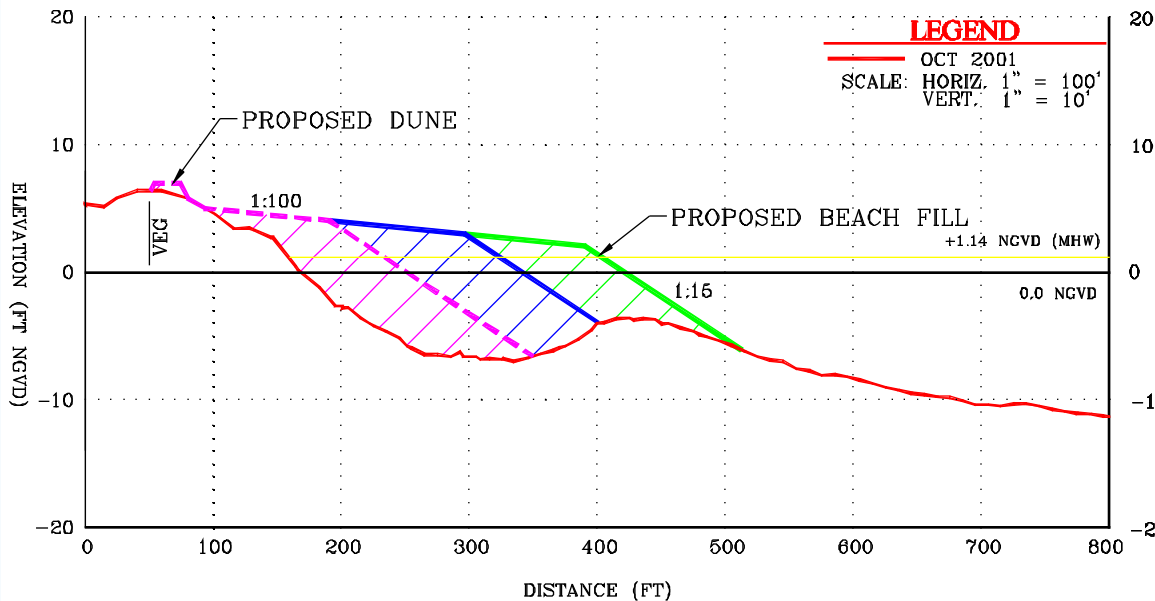
Least Tern Family



Joint Study: Navigation to Beach Management



ALTERNATIVE NUMBER 2





Storm Protection





State Park Amenities



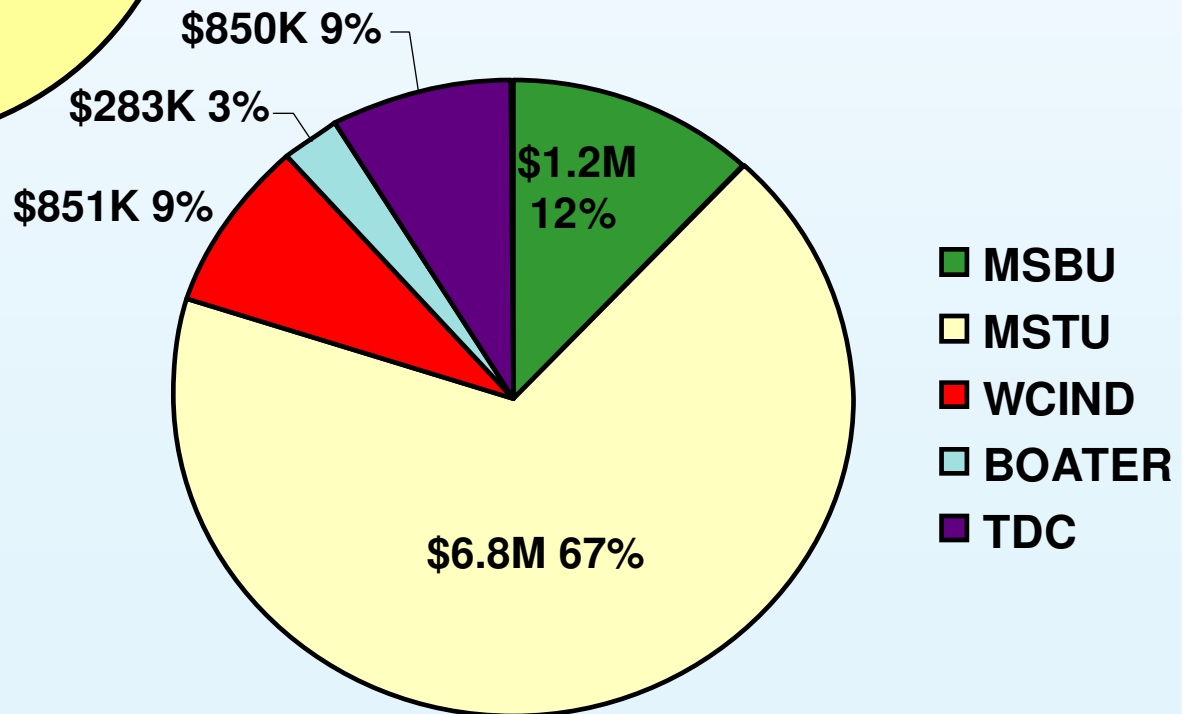
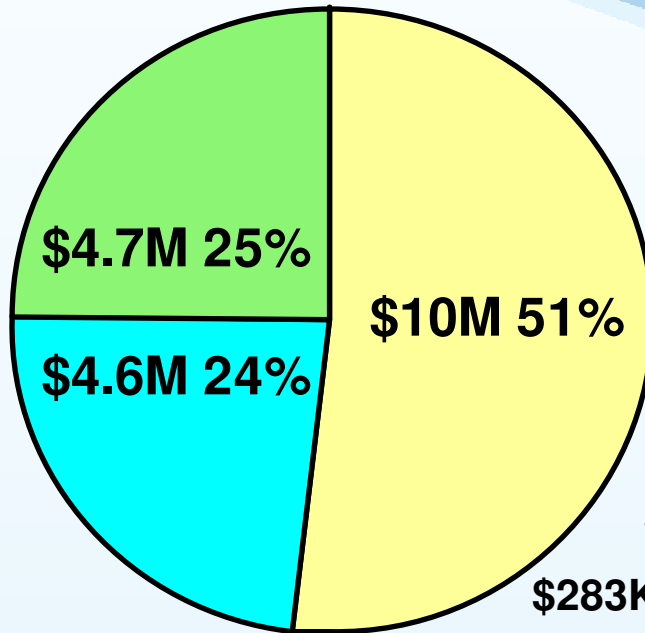
© CEC
5/2006



Funding Strategy



- LOCAL
- DEP
- FEMA



- MSBU
- MSTU
- WCIND
- BOATER
- TDC



What's Next?

